

Start from the Market Place (for details see Walk 1).



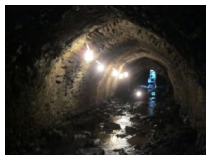
Walk towards [St Nicolas' Church](#). It was built by the Abbey just outside the Abbey precinct towards the end of the 12<sup>th</sup> century to provide a place of worship for Abbey servants and tenants.



Walk towards the arch between St Nicolas' and the [Guildhall](#), a much altered and extended development of the medieval Hospital of St John. It included a school room for the Grammar School that was re-founded in 1563 by John Roysse. (It is now Abingdon School.) The gateway at the Bridge Street corner of the Guildhall was built in 1811 as the entrance to the school yard. The external staircase was built in 1958.



The late 15<sup>th</sup> century arch was once the main [Abbey Gateway](#).



As you approach the arch you will walk over the [culverted River Stort](#). You can see the relieving arch over it in the Guildhall wall starting close to the former school gateway.

Turn right into Abbey Close. The Abbey Hall, a 1964 extension to the Guildhall, is on your right. It now houses a cinema.



[Old Abbey House](#) is on your left. The present building dates from about 1780. You then pass the entrance to the Abbey Gardens which include the site of the former Abbey church.

After a short distance turn right into Checker Walk. This takes you to the three surviving buildings that belonged to [Abingdon Abbey](#).



The [Unicorn Theatre](#) was originally a domestic building but was later used as a granary. It was converted into a theatre in 1953.



The [Checker](#) dates from the 1260s and provided a chamber (later divided) on the upper floor for the Abbey treasurer, heated by a large fireplace. There was vaulted storage underneath. It was later used entirely for storage.



The [Long Gallery](#), built in 1455, would have served as a high status guest house for the Abbey. It was later used for malting and brewing.

From shortly after the Dissolution, three generations of the [Blacknall](#) family owned the Abbey site.

To return to the Market place either retrace your steps or make a detour through the Abbey Gardens where the outline of the impressively large Abbey church is marked out on the ground.

*We'd welcome your comments on this walk. Please give your feedback [here](#).*